

From the Potting Shed

Jan. 1, 2025

www.mgofbc.org

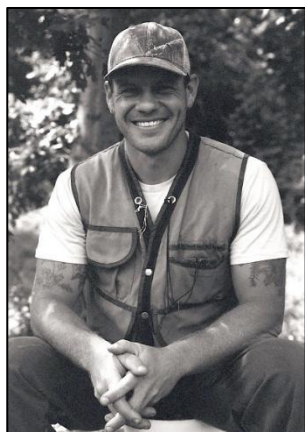


Meeting news: Tuesday, Jan. 21, 7 pm via Zoom

Ethan Tapper: Author of 'How to Love a Forest'

Ethan Tapper is a forester, birder, naturalist, and digital creator and the best-selling author of "How to Love a Forest," which was published in September.

According to Broadleaf Books (his publisher), Ethan walks readers through the fragile and resilient community that is a forest. He introduces readers to wolf trees and spring ephemerals and to the mysterious creatures of the rhizosphere and the necrosphere. He helps readers reimagine what forests are and what it means to care for them.



Publicity photo by Benji Soll

Ethan Tapper

Broadleaf Books notes that Ethan runs a consulting forestry business, Bear Island Forestry, and is a regular contributor to Northern Woodlands magazine and a variety of other publications, and he has followers on Instagram, YouTube, TikTok, and Facebook. In his personal life, Ethan works, writes, hunts, and birds at Bear Island, his 175-acre working forest, homestead, orchard, and sugarbush, in Bolton, VT.

When he bought Bear Island in 2017, Ethan said it had "every problem that a forest could have," according to Broadleaf Books. As Ethan worked to help this forest heal, Bear Island helped him crystalize many of the ideas that would eventually become "How to Love a Forest."

Click [here](#) to visit Ethan Tapper's website, which includes where to buy "How to Love a Forest."

[Editor's note: The Zoom link will be included in the mid-January Potting Shed.]

What's inside	Page
Webinars	2
Garden Club Meetings	2
MG of BC News	3-4
This and That	4

Links are clickable and are noted in **blue**.

From the President's Desk

By Theresa Schneider, Class of 2016

Happy New Year! I hope everyone had a chance to take a breather and enjoy some quality time with friends and family during the holiday season. Even though we are less than two weeks into winter, I already feel the pull of spring and the long "to do" list, but before I get to the spring list, I've got to finish MG of BC winter housekeeping tasks. These include completing hours in [Better Impact](#) and renewing my [membership](#).



The MG of BC also has winter tasks to complete; these include electing an association treasurer, a recording secretary, and a corresponding secretary and voting on updates to the bylaws. If you are interested in serving on the board as an elected officer, please contact me at mgofbc.board@gmail.com to discuss the duties of these offices. The only requirement to serve is current certification as a Master Gardener. The hours you serve as an elected officer count toward your annual volunteer-hour requirements.

See you during our Jan. 21 Zoom meeting where we will introduce current board members, vote on a Bylaws update, and listen to a presentation by forester and author Ethan Tapper. [See story at left.]

WEBINARS

All times are Eastern.

Jan. 8, 7:30 pm: Bergen-Passaic Chapter of the Native Plant Society of New Jersey sponsors Growing Native Plants in Small Spaces; speaker is Elaine Silverstein. Free. Click [here](#) to register.

Jan. 10, 3 pm: National Garden Bureau sponsors Ask the Experts About Seed and Plant Shopping Tips. Free. Click [here](#) for the summary of upcoming webinars, then click on the Jan. 10 event to register.

Jan. 11, 10 am-noon: Penn State Extension sponsors Good Gardening Saturday: Growing a Potager Garden. Fee: \$10. Click [here](#) for more information and to register.

Jan. 13, 6:30-8 pm: Penn State Extension sponsors Winter Wonderings: Plantus Unknownus. Fee: \$10. Click [here](#) for more information and to register.

Jan. 15, 7-8:30 pm: Native Plant Society of New Jersey sponsors The Art and Science of Growing Native Plants from Seed: Why, When, and How; speaker is Randi Eckel. Free. Click [here](#) for more information and to register.

Jan. 16, noon-1 pm: Smithsonian Gardens sponsors Finding Inspiration Wherever You Look: Ideas, Tips, and Tricks from Smithsonian Gardens. Free. Click [here](#) for more information and to register.

Jan. 17, 1 pm: National Garden Bureau sponsors Ask the Experts About New Plants for 2025. Free. Click [here](#) for the summary of upcoming webinars, then click on the Jan. 17 event to register.

Jan. 18, 9:30-11 am: Penn State Extension sponsors Home Gardening Series: Growing Native Ferns. Fee: \$10. Click [here](#) for more information and to register.

Jan. 18, 10-11:30 am: Penn State Extension sponsors Vegetable Gardening on a Budget. Free. Click [here](#) for more information and to register.

Skylands assemblers



Photo by Joseph Cooper

Volunteers decorate the Christmas tree in the Great Hall of Skylands Manor for the 2024 Holiday Open House. Click [here](#) to see Joseph Cooper's video on YouTube of the tree assembly from start to finish in 3½ minutes.

GARDEN CLUB MEETINGS

Jan. 14, 7 pm, Ramsey Area Garden Club, Lutheran Church of the Redeemer, 55 Wyckoff Ave. (corner of Woodland Avenue), Ramsey. Speaker: Kathy Sauerborn, Passaic County MG and president of the Clifton Garden Club. Topic: Magical Monarch Butterflies.

Jan. 15, 6 pm, Hasbrouck Heights Garden Club, 320 Boulevard, 2nd-floor library meeting room, Hasbrouck Heights. Speaker: MG Robyn Lowenthal. Subject: All About Coleus. Refreshments and greetings at 5:30 pm.

Sunny side up

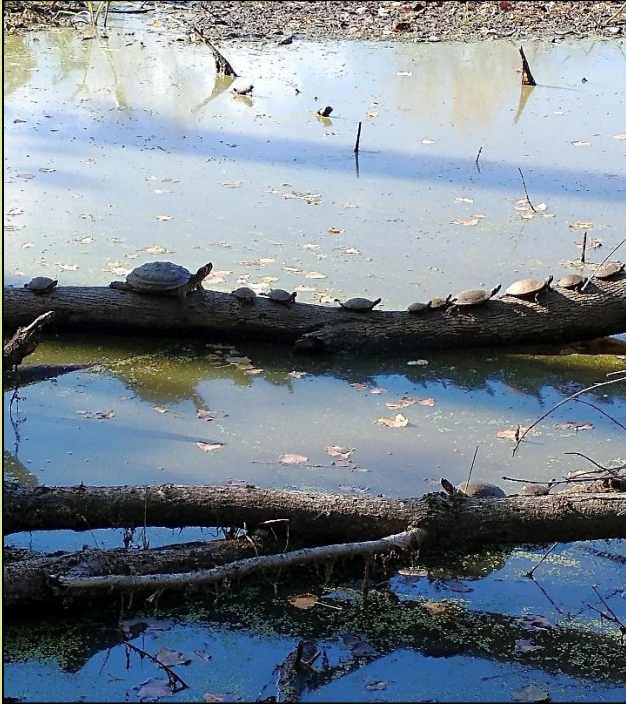


Photo by Miriam Taub

Turtles sunning themselves in a vernal pond at Teaneck Creek Conservancy recently.

MG OF BC NEWS

2025 dues reminder

By Dineen Policano, Membership chair

Thanks to all who have renewed your MG of BC membership for 2025! For those who haven't, please make your \$20 check, payable to the MG of BC, and mail to Master Gardeners of Bergen County, PO Box 824, Saddle River, NJ 07458.

Donations are always welcome. If you would like to make a donation along with your membership dues, please indicate "2025 dues plus donation" in the check's memo line. To ensure we have up-to-date contact information for you, please click [here](#) to complete the MG of BC Membership Renewal and Directory Update form online. Or, if you would prefer, you may print and complete the form sent with the Potting Shed and enclose it with your check. Thank you and Happy New Year!

Members to vote on change in Bylaws at our Jan. 21 meeting

Editor's note: In November 2022, the MG of BC board approved a change to the Bylaws to allow treasurer, recording secretary, and corresponding secretary to serve multiple, consecutive two-year terms. The proposed change needed approval from the membership before it could be effective.

The explanation of the change and the new language were included in the January 2023 Potting Shed, and the change to the Bylaws was voted on at the Feb. 21, 2023, MG of BC public meeting. However, we have neither a written record of the vote nor were any changes made to the Bylaws themselves. Therefore, we must go through the voting process again.

Below is the proposed change to the MG of BC Bylaws, which will be voted on by the membership at our Jan. 21, meeting.

Explanation: Currently, all MG of BC officers (president, vice president, treasurer, recording secretary, and corresponding secretary) can serve no more than two consecutive two-year terms.

If this change is adopted by the membership, the treasurer, recording secretary, and corresponding secretary could serve multiple, consecutive two-year terms. The president and vice president remain limited to two consecutive two-year terms.

Below is the language to be voted on:

Article II, Executive Board, Section 3

The term limits of officers shall be:

- A. Officers shall be elected for a term of two years at the October general meeting and will take office after installation at the regularly scheduled January meeting.
- B. The president and vice president may serve no more than two consecutive terms. No one may hold more than one elected office at a time.

To review the MG of BC Bylaws in their entirety, visit the "Member" section of our [website](#). After logging in, go to the "Documents" section and then click on "Bylaws."

If you're a member of the MG of BC association and don't have a username and password for the website, click [here](#) to request them.

(Continued on page 4)

MG OF BC NEWS

Jan. 15 is the deadline to enter 2024 hours

By Suzanne Danzig, Volunteer Records chair

The deadline to enter your volunteer hours into [Better Impact](#) for 2024 is Jan. 15. Recording your hours is critical to maintaining your certification as a Master Gardener as well as for Bergen County to earn credit with Rutgers Cooperative Extension.

In early 2025, I am required to provide a detailed and accurate report to Rutgers Cooperative Extension of the MG of BC's 2024 activities. An accurate accounting of our hours along with the number of our certified members will show our strength and value.

To maintain your certification as an MG you are required to complete 25 outreach (volunteer) hours and 10 continuing education hours annually. Many of you have recorded many CE hours and little to no outreach hours and vice versa. However, one category does not substitute for the other. **Reminder:** Recording your hours as you go will make your life easier and will result in my monthly reports being more accurate.

And for our interns, please do your best to complete your required 60 hours so that we can include you among the ranks of the Master Gardeners of Bergen County as soon as possible. We look forward to rewarding all of your efforts with a certificate of completion of the program.

Thank you all for your cooperation and keep up the wonderful work. As always, if you need assistance recording your hours, please reach out to me at suzannedanzig@gmail.com. You will also find a link to Better Impact from the bottom of the homepage of our [website](#).

THIS AND THAT

The environment: Indoors and outdoors

It's winter. Your houseplants need extra humidity. Click [here](#) for a Penn State Extension article explaining why houseplants need extra humidity in winter and how to provide it. And click [here](#) for information about low-light houseplants.



Pixabay photo

The National Weather Service explains how thunder relates to lightning. Click [here](#) for the article.

- Submitted by Theresa Schneider

From Rutgers Cooperative Extension of Salem County: Click [here](#) to learn about the harmful effects of microplastics in the marine environment.

BC commissioners' podcast with Joel

Joel Flagler, our Rutgers Cooperative Extension agent for Bergen County, was the guest on the most recent podcast from the Bergen County Commissioners Office.



Joel Flagler

In this 30-minute interview, Commissioner Mary Amoroso asks and Joel answers. He discusses RCE and NJAES; the MG and 4-H programs; native plants; local farms; the upcoming North Jersey Ornamental Horticulture [Symposium](#); and environmental tips for homeowners. Click [here](#) to listen.

For the artists among us: Leaf printing

Penn State Extension offers instructions for leaf printing, an easy and educational craft for all ages.

Click [here](#) to learn how to print on paper and fabric. You may have everything you need around the house, including acrylic paints. Even at this time of year, you should be able to find fresh leaves to work with. Send a photo of your results to [Miriam Taub](#), Potting Shed editor. Enjoy!